

8+ FLYING BUZZSAW DRONE USER MANUAL.



OFFICIALLY LICENSED
SKIBIDI
TOILET

FORCE1

invisible
NARRATIVES

TABLE OF CONTENTS

Important Statement & Safety Precautions	3
Important Safety Notice for Drone Care	4
Guidelines for LiPo Battery-Powered-Devices	4
Drone Charging Safety Guidelines	5
Overview of drone and transmitter	6
Part loading and unloading	10
Precautions before flying	14
Flying procedures	15
Function introductions	20
Get to know your App	23
Display the photos and video	24
Assembly Parts List	24
Troubleshooting	26

IMPORTANT STATEMENT

Please read this manual carefully before operating the drone. Your purchase implies you have read this manual and agree to follow all guidelines and instructions herein.

(1) Please operate in a safe manner. We undertake no liability for human injury or property damage caused by improper operation, as we have no control over setup, use and operation of this drone.

(2) Not safe for users under the age of 8 to use.

(3) The flying field must be legally approved by your local government.

Force1 does not assume any responsibility for any accidents caused by using non-genuine parts and accessories. Keep the packaging and user manual for future reference.

Email us at support@force1rc.com for questions, comments or to request spare parts.

SAFETY PRECAUTIONS

This drone is suitable for experienced drone users aged 8 years or above. This product contains small parts; please keep out of reach of small children.

Please pay special attention to the following safety procedures:

(1) **Keep away from humid environment:** The drone is made of a precise electronic component. Humidity or water vapor may damage electronic components causing accidents.

(2) **Keep away from rotating parts:** Rotating parts can cause serious injury and damage. Keep face and body away from rotating motors. Tie hair back, wear a hat or hood to avoid entanglement and injury.

(3) **Keep away from heat:** The drone is made of metal fiber, plastic, electronic components, etc. Keep away from heat and direct sunlight to avoid distortion and damage.

(4) **Stay aware while operating this drone:** Avoid areas with sudden changes in elevation, uneven ground or dangerous obstacles.

IMPORTANT SAFETY NOTICE FOR DRONE CARE

- Do not leave battery charging unattended
- It is recommended to charge and store the battery in a lipo battery bag (not included)
- Do not use if drone is punctured or damaged
- Do not expose the drone to water
- Do not leave the drone or battery in direct sunlight
- Please use caution when in the presence of children or animals

This drone contains a rechargeable internal lithium polymer (Li-Po) battery. Please do not attempt to remove, disassemble, replace or repair the battery after expiration of the battery. Please contact customer support if you have any questions.

GUIDELINES FOR LI-PO BATTERY-POWERED DEVICES

- Never overcharge a Li-Po battery
- Do not charge Li-Po batteries near flammable materials or liquids
- Keep Li-Po batteries away from children and animals
- Never use or charge a Li-Po battery that has ballooned or swelled
- Never use or charge a Li-Po battery that has been punctured or damaged

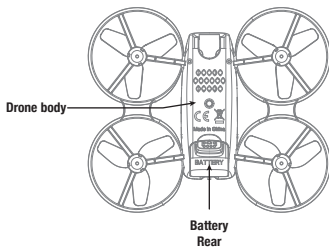
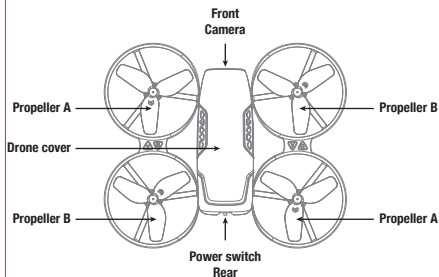
WARNING:
DO NOT LEAVE BATTERY
CHARGING UNSUPERVISED

DRONE CHARGING SAFETY GUIDELINES

- Do not leave the drone unsupervised when charging
- Make sure there is no short circuit of the power wire
- To avoid trickle charging, always unplug the drone from the USB charger when storing or leaving unattended
- Check the charger's wire, plug, and surface regularly. Do not use a broken charger
- When drone is fully charged, do not try to charge further until it has been partially or fully discharged
- Leave time between charging and using the drone
- Do NOT overcharge the drone. It may cause overheating and in turn this overheating could damage the battery or melt/burn internal surfaces when charging
- Never try charging the drone if you feel the battery has been damaged, you run the risk of fire
- Cells that are obviously swollen or have physical damage should never be used, and careful disposal is required, especially if the cells are swollen; check the engine assembly of the drone for swelling

Email us at support@force1rc.com for questions, comments or to request spare parts.

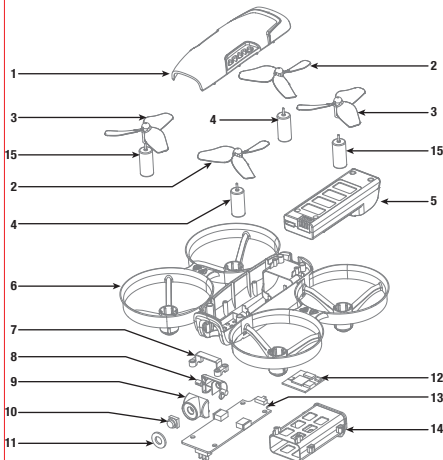
DRONE DIAGRAM



SPECS

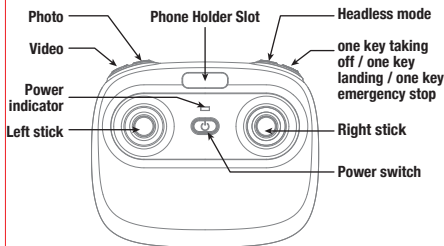
Drone Size	5.51x5.51x1.71in	Flying Distance/Radius	164ft
Weight of drone	2.22oz	Streaming Video Range/Radius	66~98ft
Flight time	6~7 mins		
Drone battery	3.7V x 500mAh	Frequency	2.4Ghz
Charging time of drone battery		~80 mins	

DETAILED VIEW

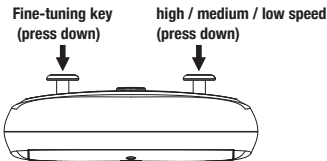


NO.	Name	NO.	Name
1	Drone cover	9	Front cover of lens
2	Propeller A	10	Lens
3	Propeller B	11	Organic lens plate
4	Forward motor	12	Camera plate
5	Battery	13	Receiver plate
6	Drone body	14	Inner box of battery
7	Lens presses	15	Reversal motor
8	The back cover of lens		

TRANSMITTER Requires 4x AA batteries (not included)



Note: Taking photos and recording videos will only work once connecting your smartphone to the drone's WIFI network and opening the app.

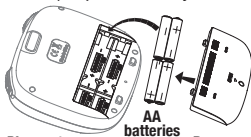


KEY FUNCTION

Left stick:	To control the drone up / down / left / right.
Right stick:	To control the drone forward / backward / left flying / right flying.
Photo:	Press the key to take one photo.
Video:	Press the key to start recording video. Press the key a second time to end recording.
Power switch:	Press the power switch down to turn on the transmitter. Press the power switch again to turn it off.
Headless mode:	Press the key to enter headless mode. Press the key again to get out of headless mode.
High/medium/low speed mode:	Press the key to move between high, medium and low speed.
Takeoff/landing/emergency stop key:	After adjusting the drone, press the key, the drone will take off automatically. While flying, press the key a second time to command the drone to land. If you need to emergency stop the drone press and hold the key, the motors will stop immediately and the drone will fall to the ground.
Fine tuning mode key:	Press down the key, the control rod will be directed to the directions required. Loose it to exit.

BATTERY INSTALLATION

Open the battery cover on the back of the transmitter, put in 4x brand new AA batteries paying attention to proper polarity (AA batteries not included). Replace the battery cover.



Picture 1

AA
batteries

Battery cover



Picture 2

1. Use brand new batteries.

Note:

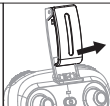
2. Confirm correct positive and negative orientation.
3. Do not mix old and new batteries.

PHONE HOLDER INSTALLATION INSTRUCTIONS

1. Take out the phone holder and insert into the transmitter(Picture 3).
2. Pull out upper lamp of the holder (Picture 4/5), put the phone into the holder, then release the clamp, and the phone will be fixed on the holder(Picture 6).
3. When removing the phone from the clip, press the clip buckle behind the clip at the same time.



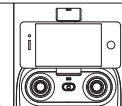
Picture 3



Picture 4



Picture 5



Picture 6

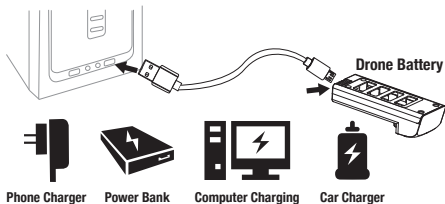
Note: Make sure that the button on phone is not clamped.

BATTERY INSTRUCTIONS

CHARGING:

1. Connect the battery to the USB charger then plug the USB end into a USB port.
2. The light on the USB charger is red during charging and turns green when fully charged.
3. Charging time is approximately 80-90 minutes.
4. Play time is approximately 6-7 minutes.

* It's recommended to select an adapter that outputs a 5V2A current for faster charging.



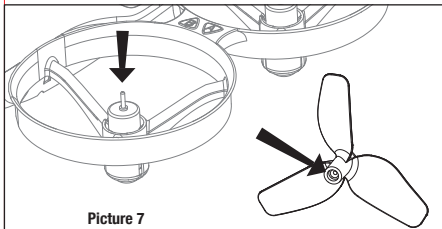
Li-Po Battery Disposal & Recycling

Wasted Lithium-Polymer batteries must not be placed with household trash. Please contact local environmental or waste agency or the supplier of your model or your nearest Li-Po battery recycling center.

PROPELLER INSTALLATION

When removing the propeller, hold the motor then pull up on both sides of the propeller.

When installing the propeller, push the center of the propeller down firmly on to the motor pin.

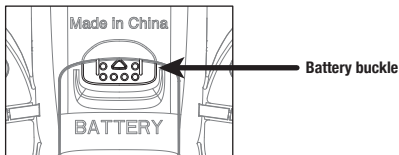
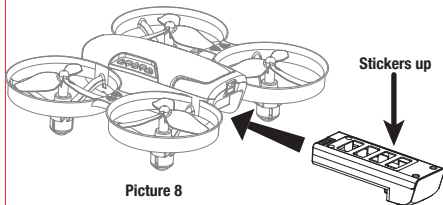


Picture 7

Note: Propellers are marked with an “A” or “B.” Always replace the propeller with a propeller that has the same identifying letter marking. If you put the wrong propeller in the wrong quadrant, the drone cannot fly properly.

BATTERY INSTALLATION

When inserting the battery into the drone, align the battery with the drone body and push the battery all the way in. When removing the battery from the drone, press the battery button and pull the battery out.



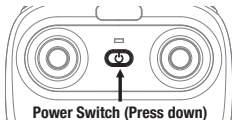
PRECAUTIONS BEFORE FLYING

1. Choose an appropriate flying area away from people, animals or items that can be damaged in the event of a crash.
2. Make sure your drone battery is fully charged and your transmitter has new batteries installed.
3. Before turning the drone on, confirm the left stick is in the middle position.
4. When turning on the drone, follow instructions closely. Turn the transmitter on first, then turn the drone on second to avoid out of control flying/crashing/injury.
5. Make sure the connection between the batteries and other parts is solid and reliable.
6. Check propellers for damage and correct orientation. Propeller A should be in the left front and back right quadrants (clockwise rotation). Propeller B should be in the right front and left rear quadrants (counter clockwise rotation).
7. Improper operation may result in the drone crashing or flying away.
8. Only use replacement parts from the manufacturer of the drone.
9. Always keep a close eye on your drone and remain in control at all times. Wear a hat or hood and tie hair back to avoid entanglement.
10. Keep face, body, hair and loose clothing away from moving parts to avoid injury.

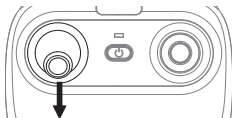
FLYING STEPS

PAIRING THE DRONE AND TRANSMITTER

Press down to power on the transmitter. The indicator light will flash.



Push the left stick to the bottom and the indicator light will flash slower to indicate pairing.



Turn on power switch of drone, the indicator light becomes from shiny to long bright which indicating the drone is in the state of successful opposite frequency, then enters the remote control mode.

It must be placed on the horizontal ground.

TAKE OFF

After successful pairing, press the 1 key takeoff key, the drone will hover at about 4 feet high.

LANDING

Press the one key landing while in flight, the drone will fall and land on the ground automatically.

(Don't push the left stick when the drone is auto landing.)



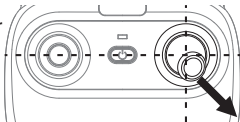
EMERGENCY STOP

If you need to kill power to the drone in case of an emergency, press and hold the take off/land button. The motors will stop immediately and the drone will fall from where it is.

Note: Only use this in an emergency situation as the drone will crash and, depending on where it is, damage may be caused.

CALIBRATION (needed when the drone is not flying properly)

Make sure the drone is on a flat surface. After pairing the drone and transmitter, push the right control level to the lower right corner as seen in the figure below. Lift your finger off the lever when the indicator light of the drone flashes quickly, indicating successful calibration.



Note: When the drone has an abnormal fall or violent impact it will be necessary to calibrate the drone using the instructions above.

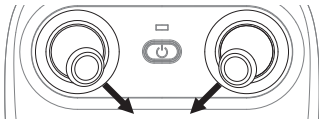
UNLOCKING/LOCKING THE MOTOR

Unlock the motor:

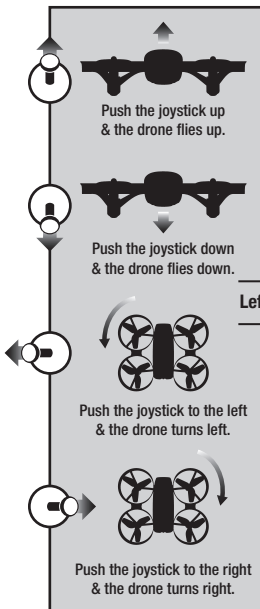
Push the left and right stick inward to the 45 degree angle simultaneously.

Lock the motor:

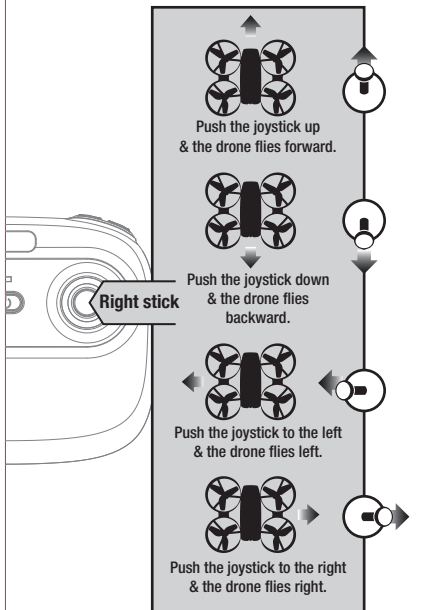
The operation will cause the motor stop running immediately before the drone takes off.

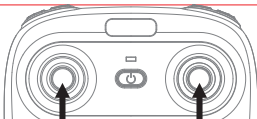


FLIGHT CONTROL



Left stick





Forward/Backward Trimmer

If the drone tilts forward, press the trimmer button and push the right stick backwards. If the drone tilts backwards, push the stick forward.

Left/Right Tilts Trimmer

If the drone tilts to the left, press the trimmer button and push the right stick to the right. If the drone tilts to the right, push the stick to the left.

Left/Right Rotates Trimmer

If the drone head rotates to the left, press the trimmer button and push the left stick to the right. If the drone head rotates to the right, push the left stick to the left.

FUNCTION INSTRUCTION

ALTITUDE HOLD

Intelligent flight control can calculate the suspended height, it has more stable control performance to make the beginner operate it easily. So please release the rocker, the drone can automatically suspended to meet the needs of single hand manipulation. The aerial photograph is more clear.

Notice: If there is damage to the propeller or motor the altitude hold function can't be used.

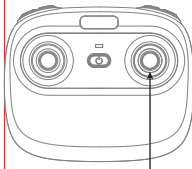
HIGH / MEDIUM / LOW SPEED MODE SWITCH

Press the down button shown in the image below.

One Beep = Low Speed

Two Beeps = Medium Speed

Three Beeps = High Speed



High / Medium/Low
Speed Mode Button

Low Speed Mode "L"

Low Speed Mode is suitable for beginner.

Medium speed Mode "M"

Medium Speed Mode is suitable for skillful pilots to play in the gentle breeze.

High Speed Mode "H"

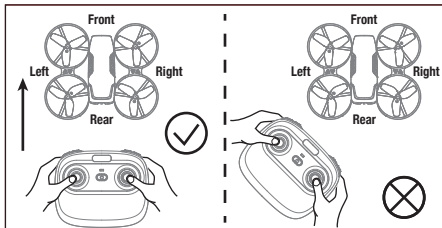
High Speed Mode is suitable for expert to experience aerial stunt outdoors.

HEADING HOLD MODE

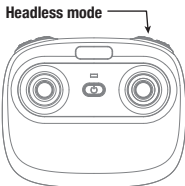
Drones generally have a front and rear, indicated by LED lights or colored propellers and the user must know their orientation in order to fly the drone appropriately. The drone's default setting is headless mode which is great for beginners. With headless mode left is left and right is right all the time, regardless of the drone's orientation.

You can activate heading hold mode before taking off or in flight. If in heading hold mode, you are required to ensure the drone front is aligned with your front. DO NOT change the direction of your transmitter and keep it flying in front of you at all times otherwise you may lose your drone.

Warning: Before activating Heading Hold Mode, be sure that the drone's front is your front. If not, the drone might become out of control or lose!



*Press the headless mode key as shown in the photo. The drone enters heading hold mode. The indicator light will flash three times and stop for 1 second, repeat the operation then press the headless mode key to exit.



LOW POWER ALARM

When the transmitter battery is low the drone will beep constantly, land the drone and replace the batteries otherwise you may lose contact with the drone.

When the drone battery is low the drone will beep. Land the drone and replace the batteries otherwise you may lose contact with the drone.

OUT-OF-DISTANCE ALARM

When the drone goes out of range from the transmitter, the drone will beep to indicate you must fly the drone closer to the transmitter or risk losing control of the drone and a crash or loss may occur.

STUCK PROTECTION

1. When a propeller is stuck, the LED light of the drone will flash quickly. Start the function of self-protection, the motor will stop working.
2. Push the left stick to the lowest position, then return it to the middle position, the indicator light of the drone will remain lit. The motor will then start working again.

GET TO KNOW YOUR APP

DOWNLOAD AND INSTALL APP: SKIBIDIFPV

This software is suitable for mobile phones in the IOS and Android system, please surf the mobile phone application store website to download and install it.

1. IOS users can search for the "SkibidiFPV" App in the App store.
2. Android users can search for the "SkibidiFPV" App in the Google Play store.
3. You can scan the QR code on the right or the QR code on the color box directly to download and install it.



DISPLAY THE PHOTOS AND VIDEO







Photos and videos are automatically stored in your phone gallery.

You can also see them in the App by clicking these icons.  

Note: You must allow the app access to your photos and videos otherwise the app cannot save images and video to your phone.

ASSEMBLY PARTS LIST (Sold separately)

There are components for choice below. For your convenient purchase, we list each part for you, you can purchase ones you want from local distributor.

		
U61-01 Drone cover	U61-02 Drone body	U61-03 Propeller A
		
U61-04 Propeller B	U61-05 Camera head cover	U61-06 Camera cover



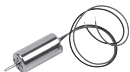
U61-07
Pressure plate



U61-08
Camera board



U61-09
Receiver holder



U61-10
Forward motor
(red/black line)



U61-11
Reverse motor
(blue/white line)



U61-12
USB Charger



U61-13
Drone battery



U61-14
Transmitter



U61-15
Smartphone Holder

STATEMENT

Our products are constantly improved, so designs and specifications are ready to change without notice. All the information on this guidebook is carefully proofread, we make every effort to be accurate. If any wrong printing, our company reserves the right of final interpretation.

TROUBLESHOOTING

No.	Problem	Problem Cause	Solution
1	The transmitter indicator light is off	1. Low battery.	1. Replace the batteries with the same type.
		2. Mixed battery positive and negative pole.	2. Refer to the instructions of battery installation, install them.
		3. Poor Contact.	3. Clear out the dirt between the battery and the cells.
2	The transmitter can't connect to the drone.	1. The indicator lights don't work.	1. Refer to the solutions above.
		2. There's interference signals nearby.	2. Restart the drone and the transmitter.
		3. Incorrect operation.	3. Operate it according to the instructions.
		4. Damage caused by repeated heavy impact on transmitter or drone.	4. To purchase new ones or replace in time from the local distributor.
3	Lack of power or unable to fly.	1. The propellers are damaged.	1. Replace new propeller with the same type.
		2. Low battery.	2. Charge the battery according to the instruction.
		3. Incorrect installation of propellers.	3. Refer to the instructions, replace the right and new propellers.

4	Can't hover and stop to one side.	1. Can't hover and drifts to one side.	1. Refer to the calibration steps in the manual.
		2. Propellers are damaged.	2. Replace the propellers, pay close attention to use the proper propeller in the proper quadrant.
		3. Motor seat is not vertical after deformation.	3. Replace the new components of motor seat.
		4. The gyroscope did not reset after a violent impact.	4. Place the drone on the horizontal ground for about 10 seconds or restart the drone, then operate it according to the instructions.
		5. Motor is damaged.	5. Refer to the instruction, replace the right motor.
5	The indicator lights don't work.	1. Low battery.	1. Charge the battery refer to the instruction.
		2. Battery expired or over-charged protection.	2. Purchase new batteries from the local distributor or charge the battery according to the procedures.
		3. Poor contact.	3. Unplug the power plug and insert again correctly.
6	Unable to set the height.	1. Propellers are damaged.	1. Replace the propellers, pay close attention to use the proper propeller in the proper quadrant.
		2. Motor damage.	2. Replace new motor.
		3. Instability of atmospheric pressure.	3. Refer to the fixed height mode in the guide.

FCC NOTE

This equipment has been tested and found to comply with the limits for a Class B digital device, pursuant to Part 15 of the FCC Rules. These limits are designed to provide reasonable protection against harmful interference in a residential installation. This equipment generates uses and can radiate radio frequency energy and, if not installed and used in accordance with the instructions, may cause harmful interference to radio communications. However, there is no guarantee that interference will not occur in a particular installation. If this equipment does cause harmful interference to radio or television reception, which can be determined by turning the equipment off and on, the user is encouraged to try to correct the interference by one or more of the following measures:

- **Reorient or relocate the receiving antenna.**
- **Increase the separation between the equipment and receiver.**
- **Connect the equipment into an outlet on a circuit different from that to which the receiver is connected.**

WARNING: Changes or modifications not expressly approved by the party responsible for compliance could void the user's authority to operate the equipment.

FCC NOTE

The equipment may generate or use radio frequency energy. Changes or modifications to this equipment may cause harmful interference unless the modifications are expressly approved in the instruction manual. Modifications not authorized by the manufacturer may void user's authority to operate this device.

This device complies with Part 15 of the FCC Rules. Operation is subject to the following two conditions:

- (1) This device may not cause harmful interference.
- (2) This device must accept any interference received, including interference that may cause undesired operation.



MADE IN CHINA