



SCOOT[®]

DRONE

USER MANUAL

FLY ME NOW.
I'LL SHOW YOU HOW!



FOR MORE INFORMATION

Visit us on line at force1rc.com for product information, replacement parts, and flight tutorial

GET STARTED WITH OUR QUICK START GUIDE



force1rc.com/scoot



COMPATIBLE WITH



FORCE1 **SCOOT SKEET** DRONE



CONTENTS

Important Statement & Safety Precautions	6
Important Safety Notice for Drone Care	7
Guidelines for LiPo Battery-Powered-Devices	7
Drone Charging Safety Guidelines.....	8
Drone Charging Instructions	9
Box Contents & Drone Overview	10
Scoot Operation Instructions	11
Flight Direction Controls.....	12
Troubleshooting Guide & Video Tutorial.....	16
Product Warranty.....	18
FCC Information & Warning	20

IMPORTANT STATEMENT

Thank you for buying a Force1 drone. Please read this manual carefully before operating the drone. Your purchase implies you have read this manual and agree to follow all guidelines and instructions herein.

- (1) Please operate in a safe manner. We undertake no liability for human injury or property damage caused by improper operation, as we have no control over setup, use and operation of this drone.
- (2) This drone is suitable for experienced RC drone users aged 8 years or above. Not safe for users under the age of 8 to use.
- (3) The flying field must be legally approved by your local government. If you have any questions about use, operation, technical support, repair, after-sale service, etc.

Force1 does not assume any responsibility for any accidents caused by using non-genuine parts and accessories. Keep the packaging and user manual for future reference.

Email us at support@force1rc.com for questions, comments or to request spare parts.

SAFETY PRECAUTIONS

This drone is suitable for experienced drone users aged 8 years or above. This product contains small parts; please keep out of reach of small children.

Please pay special attention to the following safety procedures:

(1) Keep away from humid environment

The drone is made of a precise electronic component. Humidity or water vapor may damage electronic components causing accidents.

(2) Keep away from rotating parts

Rotating parts can cause serious injury and damage. Keep face and body away from rotating motors.

Tie hair back, wear a hat or hood to avoid entanglement and injury.

(3) Keep away from heat

The drone is made of metal fiber, plastic, electronic components, etc. Keep away from heat and direct sunlight to avoid distortion and damage.

(4) Stay aware while operating this drone

Avoid areas with sudden changes in elevation, uneven ground or dangerous obstacles. For indoor use only, flying outdoors can result in a lost drone.

IMPORTANT SAFETY NOTICE FOR DRONE CARE

- Heat is a known factor in battery fires; if a battery is pushed beyond 60°C/140°F during use or charging, problems could occur due to metallic lithium generation that can damage the cell
- Store upright and do not rest objects against the drone
- Do not use if drone is punctured or damaged
- Do not expose the drone to water
- Do not leave the drone in direct sunlight
- Please use caution when in the presence of children or animals

This drone contains a rechargeable internal lithium polymer (Li-Po) battery. Please do not attempt to remove, disassemble, replace or repair the battery after expiration of the battery. Please contact customer support if you observe swelling in the engine assembly.

GUIDELINES FOR LI-PO BATTERY-POWERED DEVICES

- Never overcharge a Li-Po battery
- Do not charge Li-Po batteries near flammable materials or liquids
- Keep Li-Po batteries away from children and animals
- Never use or charge a Li-Po battery that has ballooned or swelled
- Never use or charge a Li-Po battery that has been punctured or damaged

WARNING:
DO NOT LEAVE BATTERY
CHARGING UNSUPERVISED

DRONE CHARGING SAFETY GUIDELINES

- Do not leave the drone unsupervised when charging
- Make sure there is no short circuit of the power wire
- Please use the recommended charger only. Do not charge on a gaming console. Only use your computer's USB port, power bank or phone wall charger to charge the battery
- To avoid trickle charging, always unplug the drone from the USB charger when storing or leaving unattended
- Check the charger's wire, plug, and surface regularly. Do not use a broken charger
- When drone is fully charged, do not try to charge further until it has been partially or fully discharged
- Leave time between charging and using the drone
- Do NOT overcharge the drone. It may cause overheating and in turn this overheating could damage the battery or melt/burn internal surfaces when charging
- Never try charging the drone if you feel the battery has been damaged, you run the risk of fire
- Cells that are obviously swollen or have physical damage should never be used, and careful disposal is required, especially if the cells are swollen; check the engine assembly of the drone for swelling

Email us at support@force1rc.com for questions, comments or to request spare parts

DRONE CALIBRATION INSTRUCTIONS

Follow these steps to calibrate your drone

- Turn the power switch on
- The center light will flash, When the center light turn solid green, shake the drone back and forth 3 to 5 times
- After shaking, the center light will flash, indicate the drone is in calibration mode
- Place the a flat surface while calibrates
- The drone is calibrated when the center light turns solid green

DRONE CHARGING INSTRUCTIONS

- Begin by turning the drone OFF. Connect drone to USB port with the USB charging cable and choose a charging method pictured below
- The USB chargers LED light will turn red when charging and off when fully charged. Charge time is approximately 50-60 minutes



Phone Charger



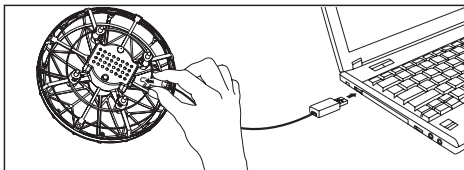
Power Bank



Computer



Car Charger



LI-PO BATTERY DISPOSAL & RECYCLING

Contact your local electronics recycling facility
for more information about how to recycle
Li-Po battery-powered products.



WARNING:
DO NOT LEAVE
BATTERY CHARGING
UNSUPERVISED

BOX CONTENTS



DRONE



USB CHARGER
CABLE



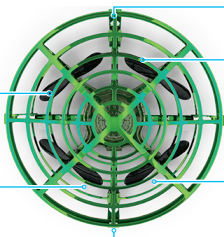
4 "A" PROPELLERS
4 "B" PROPELLERS

DRONE OVERVIEW

TOP

"A" PROPELLER
CLOCKWISE

"B" PROPELLER
COUNTER-CLOCKWISE



SENSOR

"B" PROPELLER
COUNTER-CLOCKWISE

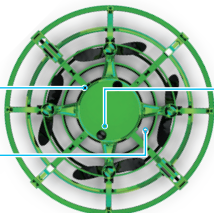
"A" PROPELLER
CLOCKWISE

SENSOR

BOTTOM

CHARGING
SOCKET

POWER SWITCH

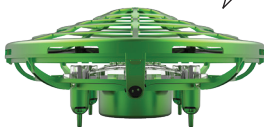


BOTTOM
SENSOR

SCOOT OPERATION INSTRUCTIONS

HOW DOES SCOOT FLY?

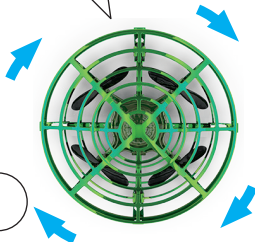
First, turn me on in a room with lots of space ...
When my center light is solid green, drop me and I'll soar and race!



You can prepare to catch me, just to be safe ...
But, if I'm turned on and charged up, I'll hover in place!

WHAT'S SCOOT DOING NOW?

I automatically rotate to sense the room
so I don't crash when I want to zoom



If I sense something nearby,
I'll change directions as I fly!

FLIGHT DIRECTION CONTROLS

HOW IS SCOOT CONTROLLED?

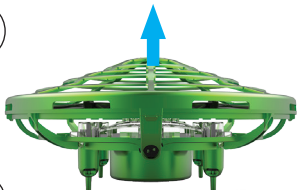
Put your hand up when I'm close,
I'll know what you mean!



You'll be telling me which way to lean!

CAN SCOOT GO HIGHER?

Put your hand under me when I'm close by.



I'll sense your request and rise as I fly!



FLIGHT DIRECTION CONTROLS

HOW DOES SCOOT STOP?

If it's time to stop flying around ...

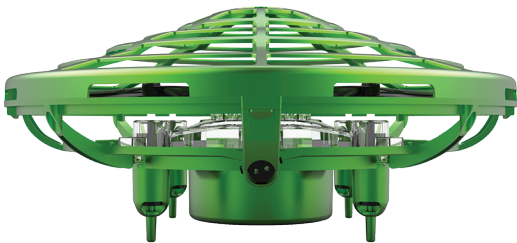
Gently "catch" me and turn me upside down!



FLIGHT DIRECTION CONTROLS

WHAT ELSE TO KNOW ABOUT SCOOT?

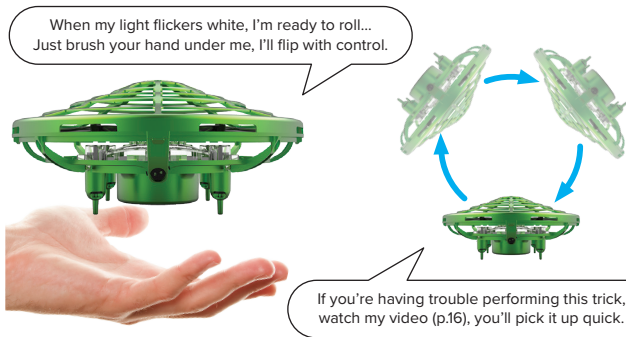
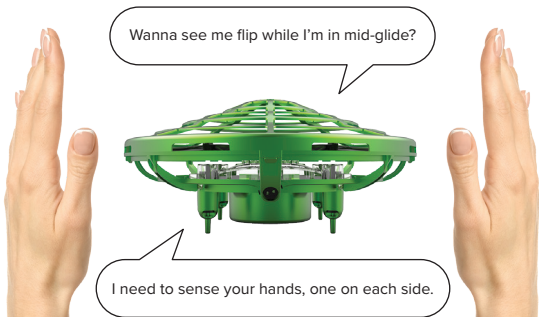
My center light will be solid red when my battery is low.



If I crash, no worries! Toss me up and I'll go!

FLIGHT DIRECTION CONTROLS

HOW TO MAKE SCOOT FLIP?



TROUBLESHOOTING GUIDE

PROBLEM	SOLUTION
How does Scoot turn on?	"My ON/OFF switch is on my underside. See the diagram on Page 10 ."
Why doesn't Scoot charge?	"Start by ensuring I am turned off prior to charging. My USB plug will turn red when it's plugged into a power source; the light will stay on while I'm charging. When I'm fully charged, the light on the USB will turn off."
Why does Scoot crash?	"I don't mean to! Make sure you are in a spacious room, I can easily change direction when I sense an obstacle. If the space is too small, I might try to change directions too quickly. I may also need to be calibrated. Instructions for this are on Page 8 ."
What if Scoot goes too fast?	"I always try to avoid any obstacles: walls, furniture, people, solid objects. Sometimes, I like to zoom! Make sure the room we're in has a good amount of airspace for my flight path."
How durable is Scoot?	"I'm pretty tough, but please be gentle! A little toss is all it takes to launch me. "Catch" me out of the air quickly and turn me upside down to stop me. Always make sure you're in a safe, clear flight area before relaunching me."
Where can Scoot fly?	"I like to explore, but I can get pretty adventurous! I'm at my best indoors, with plenty of space."
Can Scoot's performance be improved?	"If you need to adjust my flight control, check out the calibration section on Page 8 ."

**LEARN MORE ABOUT SCOOT!**force1rc.com/scoot

WARRANTY**LIMITED 90-DAY WARRANTY AND FREE LIMITED REPLACEMENT PARTS FOR 90 DAYS**

Force1rc.com warrants to the original buyer only that its products will be free from defects in material and workmanship for ninety (90) days from the date upon which the product is shipped, either directly from Force1rc.com or from an Authorized Reseller's location, to the buyer.

The following conditions must be met to be eligible for warranty coverage:

1. During the warranty period product is used as intended by the manufacturer.
2. The Product has not been disassembled or modified.
3. The labels and serial numbers show no signs of tampering or altering.
4. Buyer has a warranty code obtained by registering their product online prior to making a claim.

EXCEPTIONS: THE LIMITED WARRANTY SHALL NOT APPLY TO:

- Damage caused by normal wear and tear
- Accident, negligence, abuse, misuse, misapplication or willful damage by buyer (or its agents), or acts of nature
- Crash or burning caused by non-manufacturing factors
- Damage caused by unauthorized modification or disassembly not authorized by the instruction manual
- Damage caused by incorrect use or operation
- Damage caused by mismatch or misuse of battery or charger
- Failure of the operator to follow the operating instruction or use outside the products operating parameters
- Damage caused by operating the product in poor weather (i.e., strong wind, rain, low visibility, etc.)
- Damage caused by operating the product in or around electromagnetic interference (i.e., radio transmitting tower high-voltage wire, substation, etc.)
- Damage caused by operating the product where there may be interference caused by other wireless devices
- Operating the product with a load capacity in excess of the safe weight listed in the manual
- Operating the product with aged, damaged or unauthenticated third-party components
- Operating the product with a defective battery

WARRANTY

PROCEDURE: Any claims for breach of the foregoing limited warranty shall only be valid if buyer makes such claim in writing within ninety (90) days of the date of shipment of the product to which the claim relates. To make a warranty claim, please email warranty@force1rc.com with your full name, address, phone number, order number, drone type, part type and purchase date and product issue.

LIMITED REMEDY: Force1rc.com's sole liability, and buyer's sole remedy, for any breach of the foregoing warranty shall be at Force1rc.com's option, to (i) exchange the product with a new product or a refurbished product that is functionally equivalent to the original product, or (ii) issue a credit or refund for the purchase price of the product. Any replaced products shall be warranted as set forth herein, provided that the period within which buyer may make further claims shall be limited to the remainder of the original period for the applicable product or 90 days, whichever is longer (although the warranty period shall be suspended during any period of replacement).

DISCLAIMER: THE WARRANTY AND REMEDIES ARE EXCLUSIVE AND IN LIEU OF ALL OTHER WARRANTIES, AND FORCE1 RC.COM DISCLAIMS ALL OTHER WARRANTIES, EXPRESS OR IMPLIED, INCLUDING WITHOUT LIMITATION THE IMPLIED WARRANTIES OF MERCHANTABILITY AND FITNESS FOR A PARTICULAR PURPOSE, NON-INFRINGEMENT AND ANY WARRANTIES ARISING OUT OF COURSE OF DEALING, COURSE OF PERFORMANCE AND TRADE USAGE. FORCE1 RC.COM IS NOT RESPONSIBLE FOR DIRECT, SPECIAL, INCIDENTAL OR CONSEQUENTIAL DAMAGES RESULTING FROM ANY BREACH OF WARRANTY OR CONDITION, OR UNDER ANY OTHER LEGAL THEORY, INCLUDING BUT NOT LIMITED TO LOSS OF USE; LOSS OF REVENUE; LOSS OF ACTUAL OR ANTICIPATED PROFITS (INCLUDING LOSS OF PROFITS ON CONTRACTS); LOSS OF THE USE OF MONEY; LOSS OF ANTICIPATED SAVINGS; LOSS OF BUSINESS; LOSS OF OPPORTUNITY; LOSS OF GOODWILL; LOSS OF REPUTATION; LOSS OF, DAMAGE TO, COMPROMISE OR CORRUPTION OF DATA; OR ANY INDIRECT OR CONSEQUENTIAL LOSS OR DAMAGE HOWSOEVER CAUSED INCLUDING THE REPLACEMENT OF EQUIPMENT AND PROPERTY, ANY COSTS OF RECOVERING OR REPRODUCING ANY DATA STORED IN OR USED WITH THE PRODUCT OR ANY FAILURE TO MAINTAIN THE CONFIDENTIALITY OF INFORMATION STORED IN THE PRODUCT.

Some states do not allow the exclusion or limitation of incidental or consequential damages, so the above limitation or exclusion may not apply to you. In addition, some states do not allow limitations on how long an implied warranty lasts, so the above limitation may not apply to you.

FREE REPLACEMENT PARTS FOR 90 DAYS: Force1rc.com shall also make available any spare part needed for registered drones free of charge for 90 days from the date of purchase, with the exception of batteries, motors, circuit boards, cameras and transmitters. Shipping charges may apply. Limit one part type request per registered drone (e.g., registrants are entitled to one extra set of propellers per registered drone). To request spare parts, please email warranty@force1rc.com with your warranty code, drone name/model, current shipping address, purchase date and part type.

**GET YOUR WARRANTY CODE AT force1rc.com/pages/warranty-signup
HAVE YOUR ORDER NUMBER AND/OR DRONE UPC READY**

FCC INFORMATION

This equipment has been tested and found to comply with the limits for a Class B digital device, pursuant to part 15 of the FCC Rules. These limits are designed to provide residential protection against harmful interference in a residential installation. This equipment generates, uses and can radiate radio frequency energy and, if not installed and used in accordance with the instructions, may cause harmful interference to radio communications. However, there is no guarantee that interference will not occur in a particular installation. If this equipment does cause harmful interference to radio or television reception. Which can be determined by turning the equipment off and on, the user is encouraged to try to correct the interference by one or more of the following measures:

- Reorient or relocate the receiving antenna.
- Increase the separation between the equipment and receiver.
- Connect the equipment into an outlet on the circuit different from that to which the receiver is connected.
- Consult the dealer or an experienced technician for help.

FCC WARNING

The equipment may generate or use radio frequency energy. Changes or modifications to this equipment may cause harmful interference unless the modifications are expressly approved in the instruction manual. Modifications not authorized by the manufacturer may void user's authority to operate this device.

This device complies with part 15 of the FCC Rules. Operation is subject to the following two conditions:

1. This device may not cause harmful interference, and
2. This device must accept any interference received, including interference that may cause undesired operation.



force1rc.com



SCOOT[®]
DRONE

www.force1rc.com